



# Breaking the Speed Limit

## Streamline the Agentic AI Lifecycle

### Executive Summary

For Innovation Officers and Digital Transformation leaders, the primary mandate is speed-to-value. Yet, the journey from a promising AI concept to a deployed, production-ready agent is currently fraught with friction. The tooling landscape for building agentic AI is highly fragmented, forcing teams to cobble together disparate systems for authoring, testing, and deployment — transforming what should be a smooth development lifecycle into a series of stalled experiments that often leave valuable innovations trapped in "pilot purgatory." To realize the promise of agentic AI, enterprises must adopt integrated environments that streamline the entire lifecycle — from rapid prototyping through rigorous validation, to seamless enterprise deployment.

### Introduction: **The Friction in the Machine**

The pressure to deploy AI is intense, but the mechanics of doing so are complex. Unlike legacy software development, which has mature DevOps pipelines, the "AgentOps" lifecycle is still in its infancy.

Many organizations find themselves using one set of tools for initial prompt engineering and authoring, struggling to find adequate environments for rigorous testing against different underlying models, and facing entirely new security and infrastructure hurdles when attempting to deploy at scale. This fragmentation puts serious brakes on innovation velocity.

# The Broken Lifecycle of Agentic AI

## 1. The Authoring Bottleneck

Creating effective AI agents requires sophisticated authoring tools — particularly the agents will be capable of complex, multi-step reasoning. As a result, reliance on simple chat interfaces for complex agent design is inefficient. Teams need dedicated environments to define agent roles, set constraints, equip agents with external tools (APIs), and structure their reasoning processes.

## 2. The Validation Gap

The most critical failure point often occurs between prototyping and deployment: testing. An agent that performs well in a controlled sandbox with ten test queries may fail spectacularly when faced with the ambiguity and volume of real-world production data.

Organizations often lack integrated testing environments where agents can be rigorously validated against different underlying Large Language Models (LLMs) to optimize for cost vs. performance, and then tested for adversarial robustness before being released to users.

"An agent that performs well in a sandbox may fail spectacularly when faced with the ambiguity and volume of real-world production data. Integrated testing isn't optional."

## 3. The Deployment Wall

Moving a validated agent into the hands of thousands of employees is rarely a "push-button" operation in fragmented environments. Instead, it often requires significant custom engineering to wrap the agent in a usable interface, integrate it with existing identity providers, and ensure that it can scale to handle concurrent usage without latency.

# The Solution: **An Integrated Agent Delivery Platform**

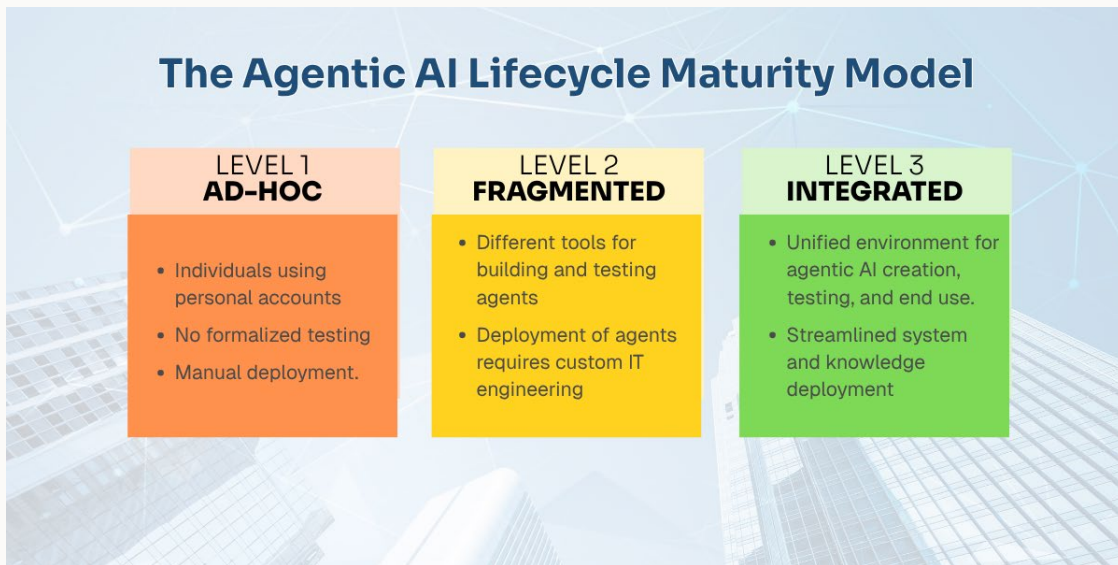
To accelerate speed-to-value, organizations must move away from disconnected point solutions and toward integrated platforms designed specifically for the agentic AI lifecycle.

An integrated approach consolidates these critical stages:

- **Rapid Prototyping:** Intuitive visual or low-code interfaces that allow technical and business users to quickly author capable agents. Anyone should be able to build the first version of an agent in less than five minutes.
- **Integrated Testing Ranges:** Built-in capabilities to run tests against custom agents, compare outputs across different models (e.g., comparing GPT-5 vs. Claude 4), and verifying guardrails.
- **Easy Deployment:** Streamlined mechanisms to publish validated agents directly to end-users via web interfaces, internal portals, or API endpoints, automatically handling the underlying infrastructure. Agents can be created in a universal manner to function within the prototyping platform and can function externally in other systems.

# Conclusion

Speed in AI adoption isn't just about how fast you can write a prompt; it's about how fast you can reliably deliver a capability to the business. By streamlining the lifecycle from authoring to testing to deployment in a single, cohesive environment, enterprises can transform AI from a series of interesting experiments into a scalable production reality.



**Accelerate your journey from concept to deployed agent.  
Discover the infrastructure required for rapid AI delivery.**

[Learn More](#)



[MillPondResearch.com](https://MillPondResearch.com)